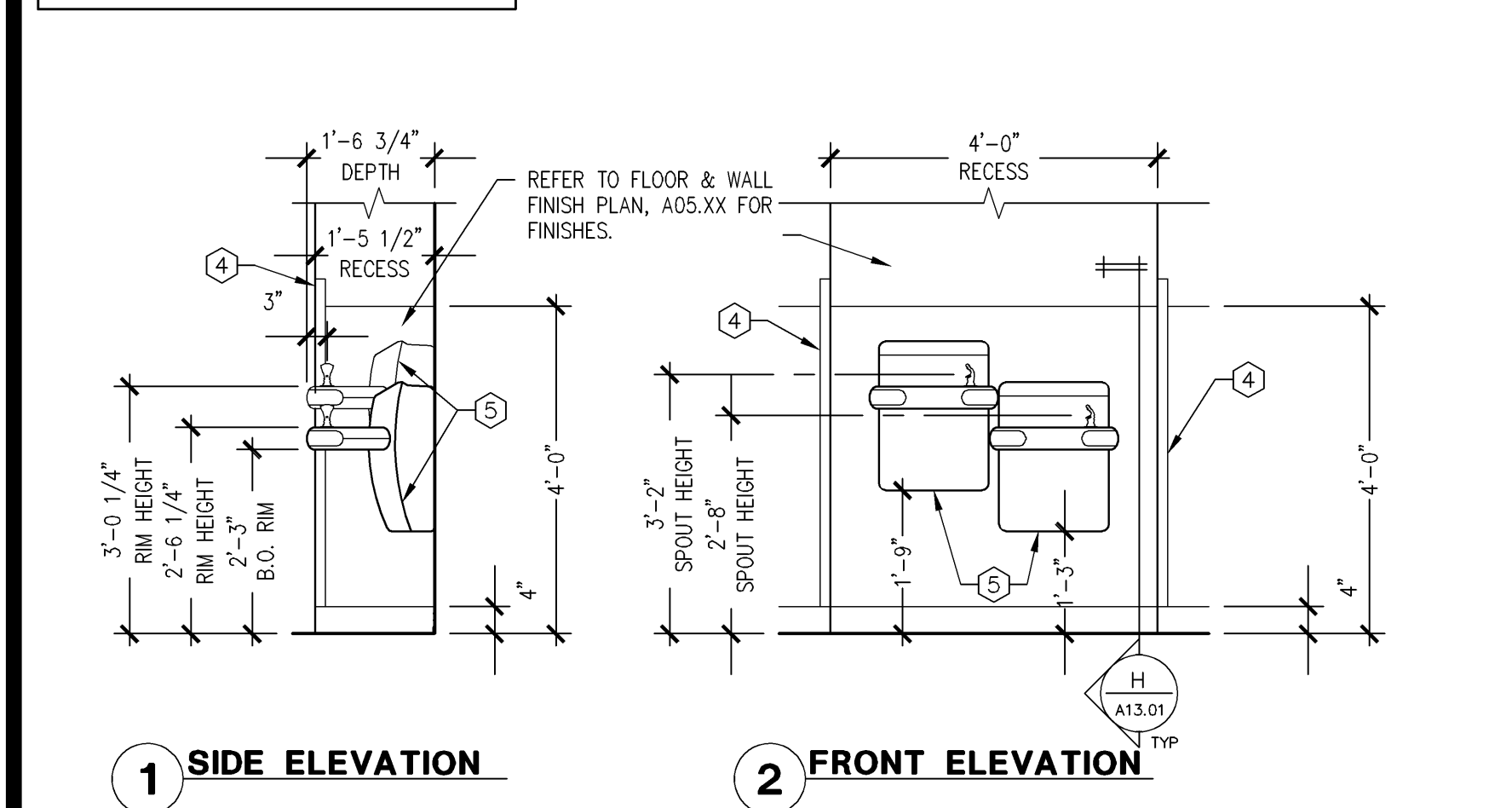


**POWDER ROOM TILE WAINSCOT (PKG2)**  
**SECTION DETAIL**  
3\"/>

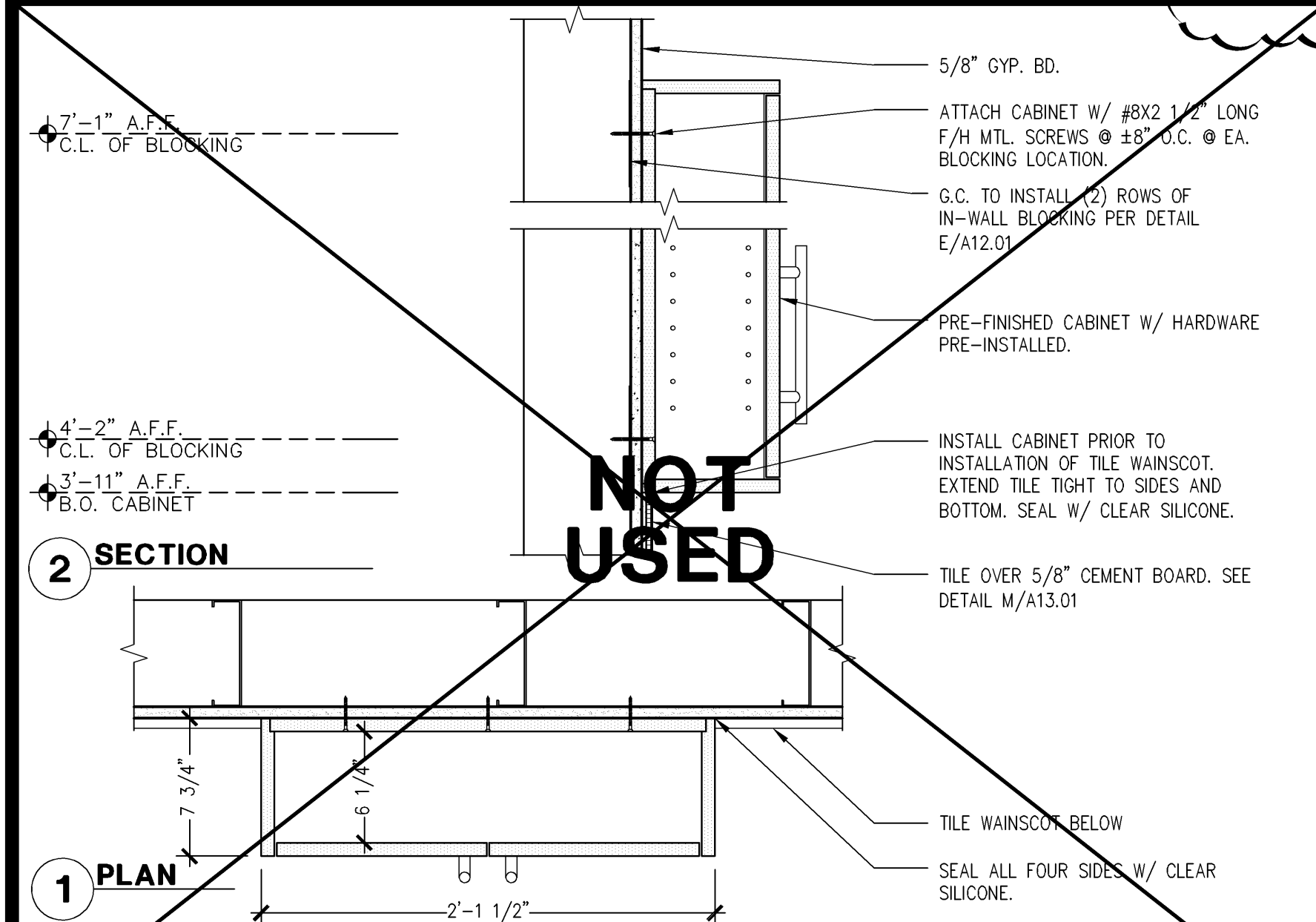
IF A SINGLE DRINKING FOUNTAIN IS ALLOWED, THEN THE LOW UNIT DEPICTED HERE SHALL BE INSTALLED AND THE RECESS WIDTH MAY BE REDUCED TO 30\"/>



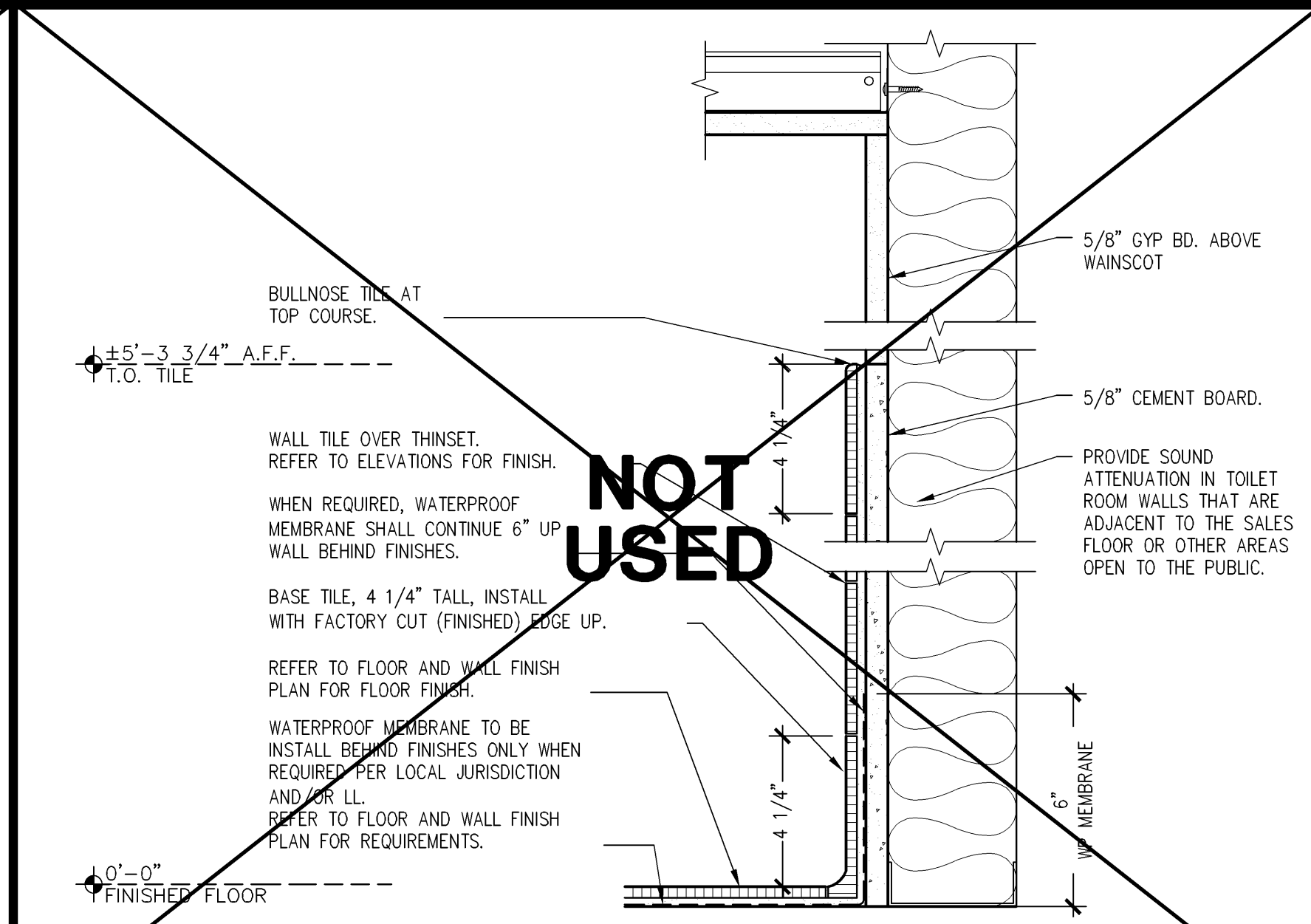
**DRINKING FOUNTAIN (NON-PUBLIC)**  
**ELEVATIONS**  
1/2\"/>

- THE STRUCTURAL STRENGTH OF GRAB BARS SHALL MEET THE FOLLOWING SPECIFICATIONS:
- BENDING STRESS IN A GRAB BAR INDUCED BY THE MAXIMUM BENDING MOMENT FROM THE APPLICATION OF 250 lbf (1112N) SHALL BE LESS THAN THE ALLOWABLE STRESS FOR THE MATERIAL OF THE GRAB BAR.
  - SHEAR STRESS INDUCED IN A GRAB BAR BY THE APPLICATION OF 250 lbf (1112N) SHALL BE LESS THAN THE ALLOWABLE SHEAR STRESS FOR THE MATERIAL OF THE GRAB BAR. IF THE CONNECTIONS BETWEEN THE GRAB BAR AND ITS MOUNTING BRACKET OR OTHER SUPPORT IS CONSIDERED TO BE FULLY RESTRAINED, THEN DIRECT AND TORSIONAL SHEAR STRESSES SHALL BE TOTALLED FOR THE COMBINED SHEAR STRESS, WHICH SHALL NOT EXCEED THE ALLOWABLE SHEAR STRESS.
  - SHEAR FORCE INDUCED IN A FASTENER OR MOUNTING DEVICE FROM THE APPLICATION OF 250 lbf (1112N) SHALL BE LESS THAN THE ALLOWABLE LATERAL LOAD OF EITHER THE FASTENER OR MOUNTING DEVICE OR THE SUPPORTING STRUCTURE, WHICHEVER IS THE SMALLER ALLOWABLE LOAD.
  - TENSILE FORCE INDUCED IN A FASTENER BY A DIRECT TENSION FORCE OF 250 lbf (1112N) PLUS THE MAXIMUM MOMENT FROM THE APPLICATION OF 250 lbf (1112N) SHALL BE LESS THAN THE ALLOWABLE WITHDRAWAL LOAD BETWEEN THE FASTENER AND THE SUPPORTING STRUCTURE.
  - GRAB BARS SHALL NOT ROTATE WITHIN THEIR FITTINGS.

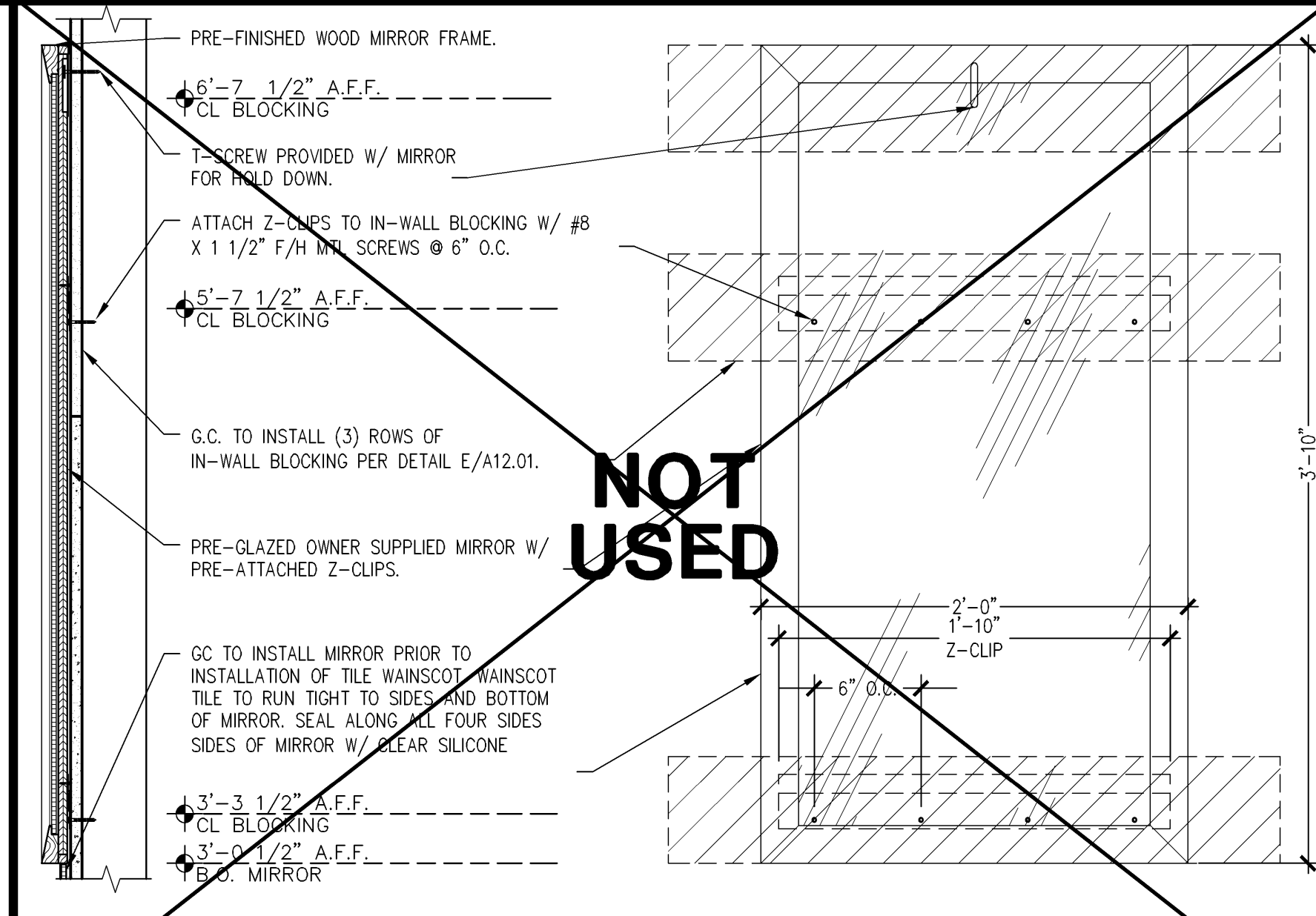
**GRAB BAR**  
**INSTALLATION DETAIL**  
6\"/>



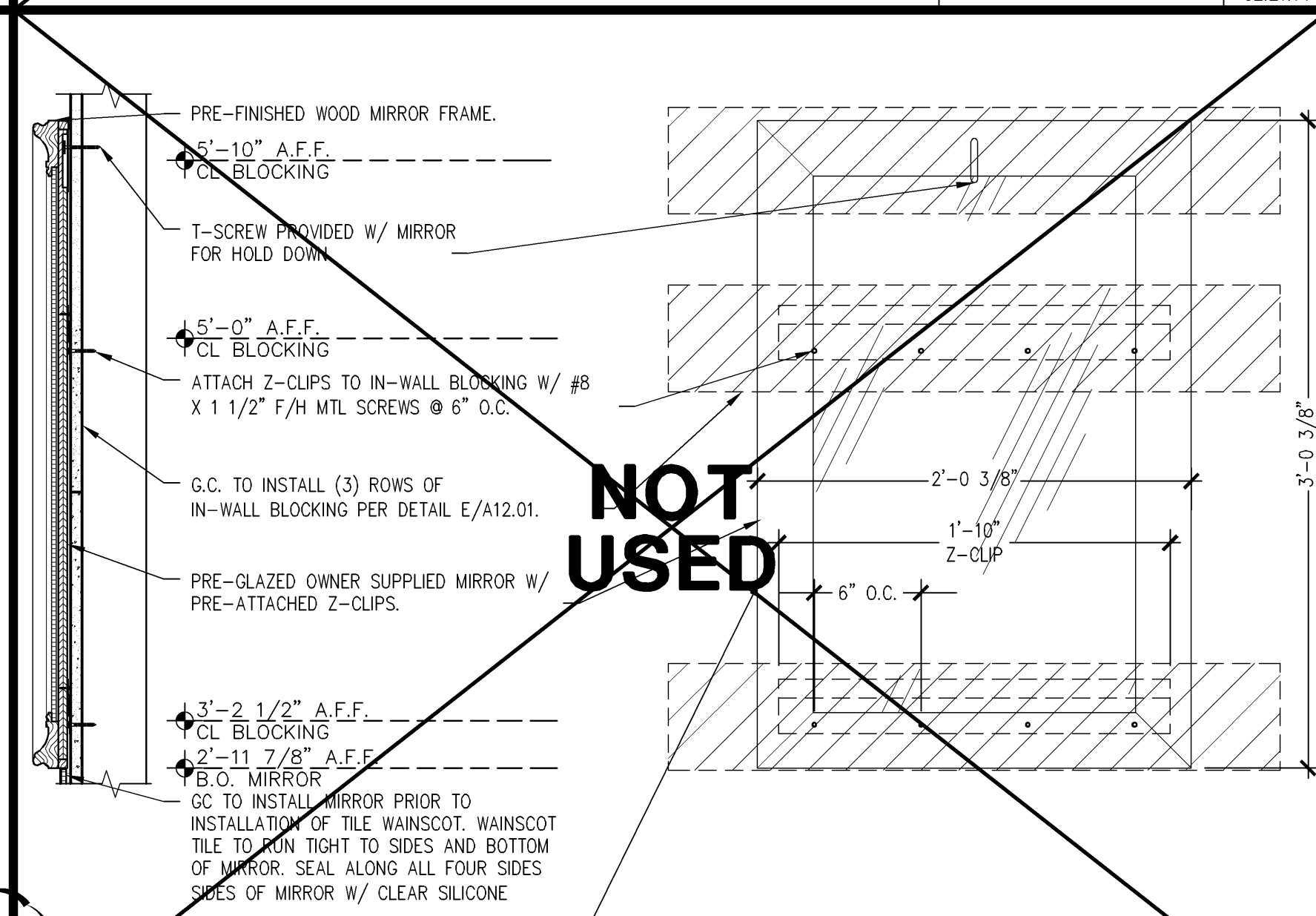
**TOILET ROOM CABINET**  
**INSTALLATION DETAILS**  
1 1/2\"/>



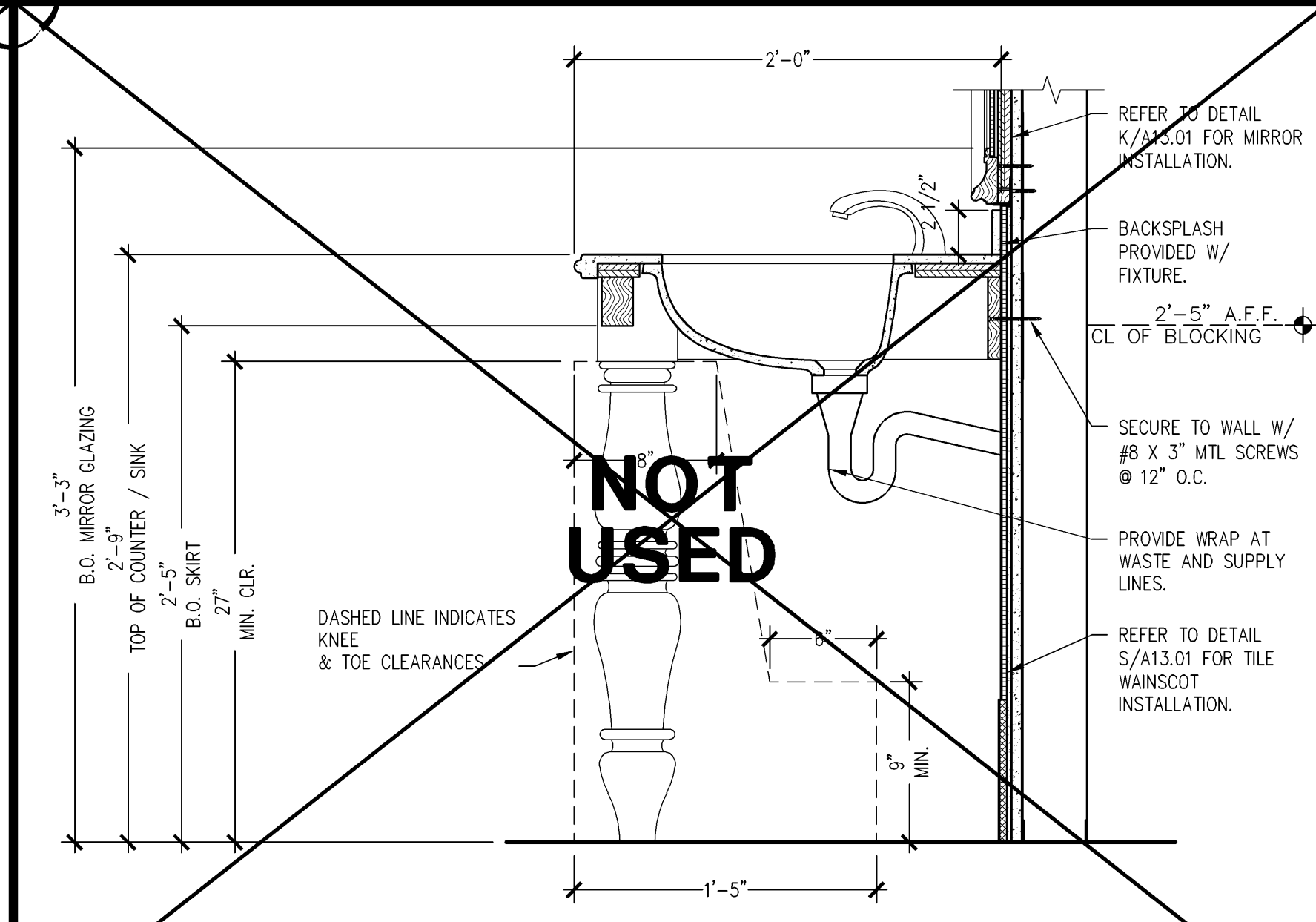
**TOILET ROOM TILE WAINSCOT**  
**SECTION DETAIL**  
3\"/>



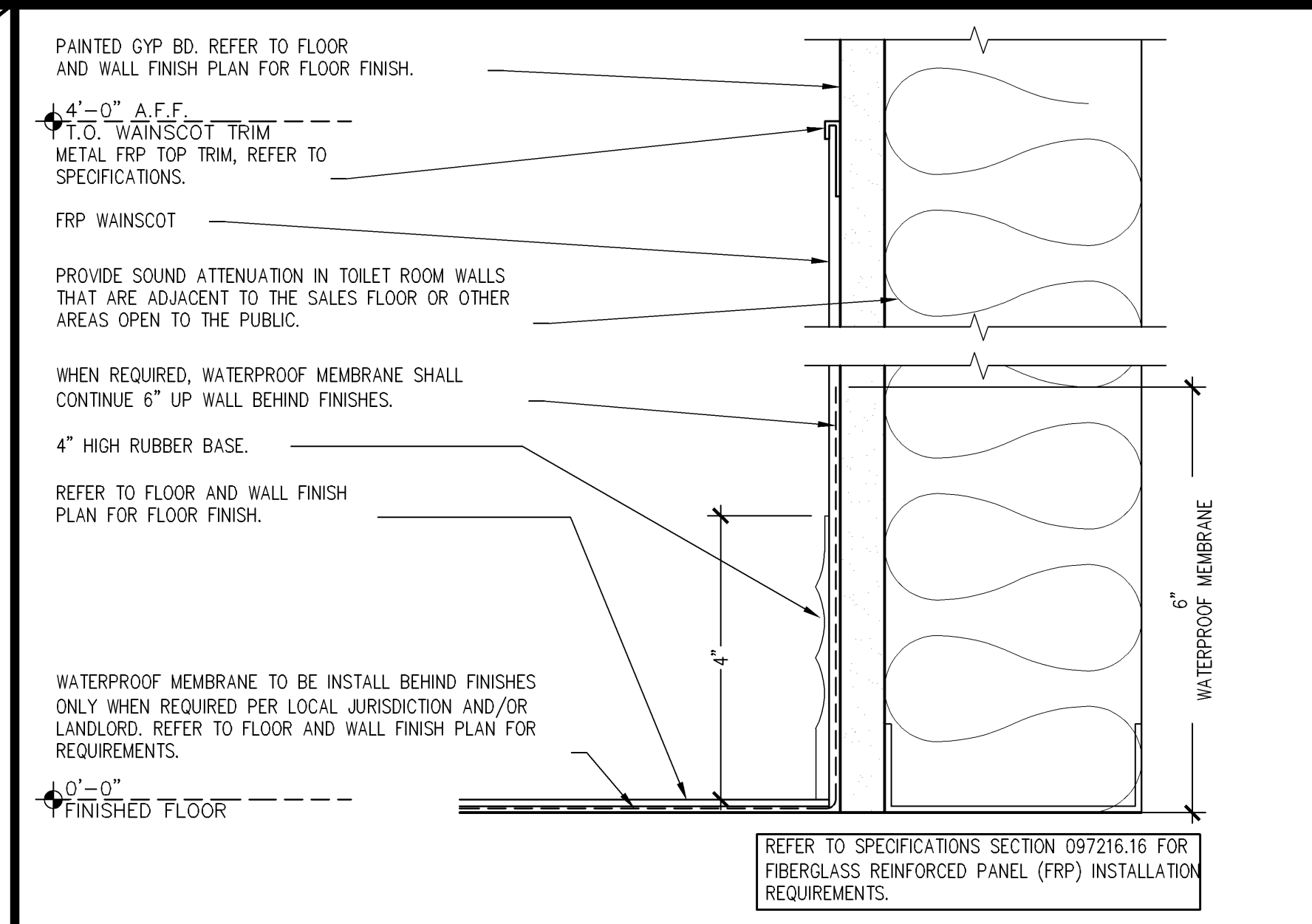
**TOILET ROOM MIRROR**  
**INSTALLATION DETAIL**  
1 1/2\"/>



**POWDER ROOM MIRROR**  
**INSTALLATION DETAIL**  
1 1/2\"/>



**POWDER ROOM LAVATORY (PKG2)**  
**INSTALLATION SECTION**  
1 1/2\"/>



**FRP WAINSCOT**  
**SECTION DETAIL**  
6\"/>

KEY	ITEM	FURN	INST	E	REMARKS	
	GENERAL/GLOBAL	O	GC	O	GC	
1	DOOR AND JAMB, REFER TO DOOR SCHEDULE A00.2 FOR HARDWARE AND RESPONSIBILITIES					
2	DOOR STOP, ALIGN WITH DOOR HANDLE. PROVIDE BLOCKING PER E/A12.1.					SEE DOOR SCHEDULE A00.2 FOR SPEC AND RESPONSIBILITY
3	FLUSH SWICH					REFER TO PLUMBING DRAWINGS
4	1 1/2" X 1 1/2" X 48" BRUSHED STAINLESS STEEL CORNER GUARD - GAMCO #GC-2					PURCHASE THROUGH CBC
5	DRINKING FOUNTAIN					REFER TO PLUMBING DRAWINGS
6	DRINKING FOUNTAIN GUARD RAILS - BRUSHED STAINLESS STEEL PER DETAIL F/A13.01					PURCHASE THROUGH CBC
7	MOB AND KICK-IN FINGER LOCK ONE (4) HIGH					REFER TO PLUMBING DRAWINGS
8	MED LOCKER - UNMOUNTED (400#) (200#)					MURDERER THROUGH CBC
9	PERSONAL LOCKER (400#) - GAMCO #GC-1 G.C. TO PROVIDER IN WALL BLOCKING PER E/A14.2					PURCHASE THROUGH CBC
10	FRAMED LOCKER USAGE SIGN, MOUNT ABOVE LOCKER BANK					REFER TO PLUMBING DRAWINGS
11	36" TELEVISION CART W/ TV/DVD COMBO UNIT					REFER TO ELECTRICAL DWGS
12	MOTION SENSOR ACTUATED LIGHT SWITCH					REFER TO ELECTRICAL DWGS
13	GRATED SINKY OUTLET					REFER TO ELECTRICAL DWGS
14	ACCESSIBLE SIGNAGE					REFER TO DETAIL H/A00.4
15	WATERPROOF MEMBRANE					SEE SPEC. SECTION 071416

**BREAK ROOM/AREA**  
1 1/2\"/>

1	DOOR AND JAMB, REFER TO DOOR SCHEDULE A00.2 FOR HARDWARE AND RESPONSIBILITIES				
2	DOOR STOP, ALIGN WITH DOOR HANDLE. PROVIDE BLOCKING PER E/A12.1.				SEE DOOR SCHEDULE A00.2 FOR SPEC AND RESPONSIBILITY
3	FLUSH SWITCH				REFER TO PLUMBING DRAWINGS
4	1 1/2" DIA. HOLE IN WALL FOR PLUMBING				
5	DRINKING FOUNTAIN				REFER TO PLUMBING DRAWINGS
6	DRINKING FOUNTAIN GUARD RAILS - BRUSHED STAINLESS STEEL				PURCHASE THROUGH CBC
7	1" DIA. HOLE IN WALL FOR PLUMBING				
8	MOBILE LOCKER BANK - 6 UNITS HIGH. G.C. TO SECURE TO WALL THROUGH BACK.				PROVIDED BY LLS
9	PERSONAL LOCKER BANK - 8 UNITS HIGH. G.C. TO SECURE TO WALL THROUGH BACK.				PROVIDED BY LLS
10	FRAMED LOCKER USAGE SIGN, MOUNT ABOVE LOCKER BANK.				PROVIDED BY LLS
11	36" X 36" TABLE				PROVIDED BY LLS
12	STACKING CHAIRS				PROVIDED BY LLS
13	MOBILE TELEVISION CART W/ TV/DVD COMBO UNIT				PROVIDED BY LLS
14	HEADSET STORAGE CART				PROVIDED BY LLS
15	"ALL" SYSTEM EQUIPMENT, REFER TO DETAIL D/A14.2. SEE ELEC DWGS FOR POWER REQUIREMENTS				PROVIDE BY LLS BLOCKING AND WIRING BY GC
16	48" X 36" ASSOCIATE RESOURCE CENTER COMMUNICATION BOARD. G.C. TO MOUNT TOP @ 6'-0" A.F.F.				PROVIDED BY LLS
17	48" X 36" COMMUNICATION RESOURCE CENTER COMMUNICATION BOARD. G.C. TO MOUNT TOP @ 6'-0"				PROVIDED BY LLS
18	48" X 36" GET READY CENTER COMMUNICATION BOARD. G.C. TO MOUNT TOP @ 6'-0" A.F.F.				PROVIDED BY LLS
19	SUSPENDED PANELS, REFER TO FINISH SCHEDULE A00.2 FOR SPEC AND RESPONSIBILITY				INSTALL PER DETAIL N/A14.02. FOR ACCESSORIES ORDER FROM <a href="http://www.torcon.com">www.torcon.com</a>
20	2" DIA. HOLE IN WALL FOR PLUMBING				
21	PROVIDE (2) 1/2" DIA. HOLE IN WALL FOR PLUMBING				
22	HEAVY DUTY 2" HOOKS FROM STORE WALL				HANG ON STORE WALL (2) HEAVY DUTY 2" HOOKS
23	MAGNETIC FORESLAM DRY-ER BOARD W/ ALUMINUM FRAME AND MARKER TAPES, 48"x72", MOUNT TOP @ 6'-0" A.F.F.				
24	(2) 1/2" DIA. HOLE IN WALL FOR STORE WALL FOR CELL PHONE CHARGERS (www.threelink.com) HANG AT 4'-0" A.F.F.				REFER TO ELEC. DWGS. FOR POWER REQUIREMENTS
25	MICROWAVE RACK				PROVIDED BY LLS

1. INSTALLATION OF ALL ITEMS MUST FULLY COMPLY WITH ALL LOCAL, STATE, AND FEDERAL CODES.
2. DOORS SHALL NOT SWING INTO THE CLEAR FLOOR SPACE OF ANY PLUMBING FIXTURE. THEY MAY SWING INTO THE REQUIRED TURNING RADIUS.
3. GC TO PROVIDE IN-WALL BLOCKING FOR ALL WALL MOUNTED ITEMS PER DETAIL E OR F ON A12.01. REFER TO EACH ITEM FOR ACTUAL TYPE REQUIRED.
4. REFER TO INTERIOR ELEVATIONS FOR MOUNTING HEIGHTS OF ALL FIXTURES AND ACCESSORIES IN TOILET ROOMS AND POWER ROOMS.
5. REFER TO PLUMBING DRAWINGS FOR SPECIFICATIONS OF ALL PLUMBING FIXTURES.
6. INSTALL ALL ITEMS PER MANUFACTURER'S INSTRUCTIONS.
7. REFER TO SHEET A05.XX FLOOR AND WALL FINISH PLAN FOR FLOOR FINISH CALLOUTS
8. REFER TO SHEET A05.XX AND INTERIOR ELEVATIONS FOR WALL FINISH CALLOUTS
9. REFER TO RESPONSIBILITY SCHEDULE ON SHEET A00.01 FOR FINISH RESPONSIBILITIES
10. WHEN INDICATED ACCESSORIES LISTED SHALL BE PROVIDED BY THE GENERAL CONTRACTOR THROUGH THE FOLLOWING DISTRIBUTOR. NO EXCEPTIONS OR SUBSTITUTIONS WILL BE ALLOWED.
- CONSTRUCTION BUILDING SYSTEMS, INC. (CBC)  
JIM CAMPBELL  
800.444.4637, EXT #5054

**AMENITY KEYNOTES / RESPONSIBILITY SCHEDULE**  
1/2\"/>



**OFFICE/TRAINING ROOMS**  
**SECTION DETAIL**  
6\"/>

KEY	ITEM	FURN		INST		E	REMARKS
		O	GC	O	GC		
	OFFICE/TRAINING ROOMS						
1	DESK LAMINATE TOP, BRACKETS AND GROMMETS			●			REFER TO DETAIL E/A14.2
2	WALL MOUNTED OVERHEAD CABINET WITH SLIDING TRANSLUCENT DOOR. LENGTH (42" OR 48") AS INDICATED IN PLAN. PROVIDED W/ TASK LIGHTING. REFER TO ELEC DWGS			●			PROVIDED BY LLS REFER TO DETAIL F/A14.2
3	TASK CHAIR						PROVIDED BY LLS
4	LATERAL FILE CABINET - 4 DRAWERS HIGH			●			PROVIDED BY LLS
5	NOT USED						
6	MOBILE PEDESTAL FILE CABINET			●			PROVIDED BY LLS
7	COMPUTER WORKSTATION (INDICATED W/ HATCHED AREA)				●		REFER TO ELEC DWGS.
8	WALL MOUNTED WORKSTATION INDICATED BY HATCHED AREA						REFER TO ELEC DWGS.
9	WALL MOUNTED SHEDDING TOP FOR CCHA SUPPORT, STANDARDS, BRACKETS AND CHAIRS. SEE DETAIL E/A14.2.1				●		NOTE: PARTIAL BOARD SHELVES PROVIDED BY LLS
10	MAILBOX UNIT, SET ON FILE CABINET OR DESK SURFACE				●		PROVIDED BY LLS
11	INFORMATION LOCK BOX PLACED ON FLOOR BELOW DESK				●		
12	SMALL SAFE. G.C. TO SECURE PER MFG SPECIFICATIONS				●		
13	WALL SAFE. G.C. TO SECURE PER MFG SPECIFICATIONS				●		
14	MIRROR, TRAINING ROOM/BODIES				●		PROVIDED BY LLS
15	MAGNETIC DRY-ERASE BOARD W/ ALUMINUM FRAME AND HANGER. 36" X 48" 3/8" H.F.T. MOUNT TO FACE OF DOOR W/ 5"x6" X.F.F.				●		PROVIDED BY LLS
16	MAGNETIC DRY-ERASE CUSHION BOARD 36" X 48" 3/8" H.F.T. MOUNT TO FACE OF DOOR W/ 5"x6" X.F.F.				●		PROVIDED BY LLS
17	FURNISH THE CERTIFICATE OF OCCUPANCY AND A LIST OF THE NAMES, ADDRESSES AND TELEPHONE NUMBERS OF ALL SUBCONTRACTORS INCLUDING ALL USING PROVIDER'S INDICATORS. MOUNT IN SEPARATE R			●			MOUNT AT FACE HEIGHT, ON THE OFFICE SIDE OF THE MANAGER'S